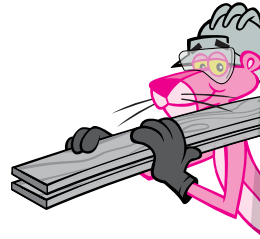
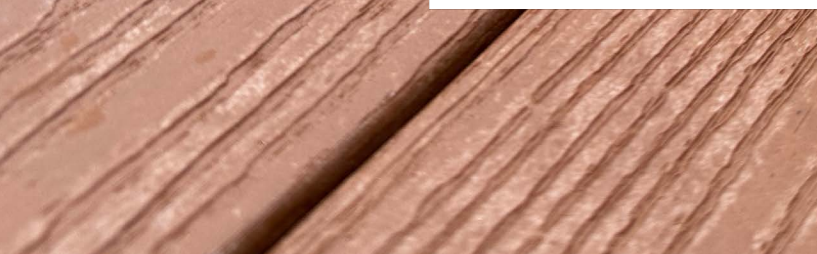




LUMBER WEARDECK® DECKING



**STRONGER.
MORE DURABLE.
HEAT-REFLECTIVE.**



HOW WE BUILD NOW™

Product Data Sheet | **WEARDECK®** | May 2024

WEARDECK® DECKING

STRONGER. MORE DURABLE. HEAT-REFLECTIVE.

Designed around our Advantex® Fiberglas™ reinforcement technology, WEARDECK® combines strength, durability, and comfort, enabling you to spend less time worrying about maintenance, and a lifetime enjoying construction that stands up to the elements.

- GLAS-POWERED™ by Owens Corning Advantex® Fiberglas™
- Wood-free Composite Lumber
- ASTM D7032 Compliant
- Limited lifetime warranty – Residential applications
- 25-year limited warranty – Commercial applications

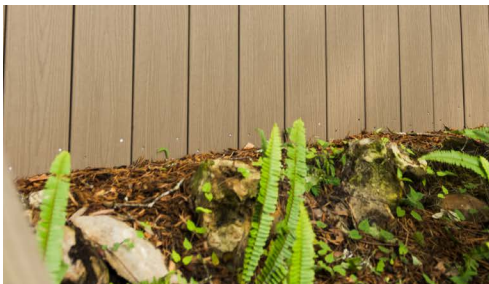
PRODUCT BENEFITS



STRONGER¹

- Spans 24 inches on center
- High live load capacity

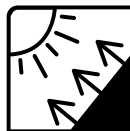
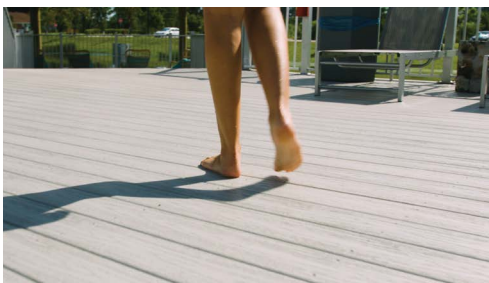
UP TO **2.7x** STRONGER



MORE DURABLE²

- Rated for ground contact and underwater installation
- Protects against water and the elements
- Resists mold, mildew, pests, stains, and fading

4-10x LESS EXPANSION & CONTRACTION



SAFE & COMFORTABLE

- Heat-reflective technology
- Splinter-free
- Slip-resistant design

DESIGNED TO **REDUCE HEAT ABSORPTION**



EASY TO INSTALL & MAINTAIN

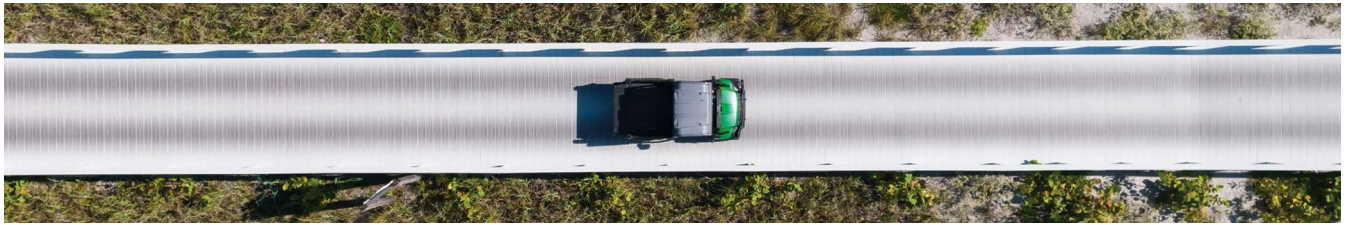
- Installs like wood
- Easy to carry and move
- Requires less understructure for faster, more affordable installation (spans 24" on center)
- Cleans easily with soap and water, or a pressure washer

LOWER TOTAL COST OVER THE YEARS

¹ WEARDECK® offers the highest live load capacity ratings in the industry compared to other composite, HDPE, and PVC boards.
² In comparison with the average performance of other composite, HDPE, PVC, and wood boards.



THIS IS
HOW WE
BUILD STRONGER



DISCOVER THE GLAS-POWERED™ LUMBER

HDPE¹ + FIBERGLAS™



¹ High-Density Polyethylene



Unlike other traditional boards, WEARDECK® is a **GLAS-POWERED™** lumber that delivers strength and durability from the inside out.

Its enhanced wood-free design is reinforced with the Owens Corning Advantex® Fiberglas™ technology. This powerful ingredient ensures that WEARDECK® holds up exceptionally well under high live loads – with durability that lasts a lifetime.

| ATTRIBUTES | WEARDECK® | OTHER HDPE BOARDS | OTHER COMPOSITE BOARDS | PVC |
|----------------------------------|-----------------------------|---------------------|------------------------|------------------|
| GLAS-POWERED™ | Advantex® Fiberglas™ | × | Wood Fibers | × |
| Structural | ✓ | × | × | × |
| Strength | 2.7x Stronger | × | × | × |
| Span | 24" o.c. | 16" o.c. | 16" o.c. | 16" o.c. |
| Thermal Expansion | 1/32" | 4–10x More Movement | 6–8x More Movement | 6x More Movement |
| Underwater & Ground Installation | ✓ | ✓ | × | × |
| Heat-Reflective Technology | ✓ | × | × | × |
| Warranty | Limited Lifetime | Limited Lifetime | 25 Years | Limited Lifetime |

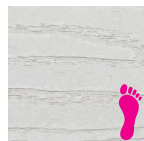
The WEARDECK® Composite Lumber performance data generated through ASTM testing method using 5/4 x 6", 2 x 8" and 2 x 10" profiles. Other HDPE, composite, and PVC boards' comparative data are the average performance based on public data from equivalent products. Thermal expansion performance data generated through ASTM D696 testing method using 5/4 x 6" profiles. Absolute performance data, design input, and span design table available upon request.

COLORS

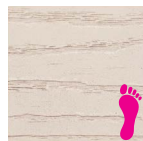
White



Barefoot Gray



Barefoot Sand



Sand



Gray



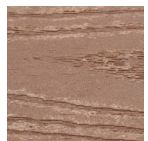
Weatherwood



Cedar



Saddle



Coollest

Barefoot colors & heat-reflective technology

Cooler

Heat-reflective technology

Cool

Heat-reflective technology

Black color available for structural profiles. Product samples available upon request. Other special colors available. Minimum order quantities may apply.

Actual product colors may vary due to photographic lighting sources or your screen settings.

STANDARD PROFILES & PACKAGING

All 8 standard profiles have a square-edged design.



5/4" x 6"

Spans 24" on Center

Standard Lengths: 12', 16', 20'
 Custom Lengths: Up to 28'
 Woodgrain: One Side
 Colors Available: All
 Common Uses: Decking, Railing



5/4" x 8"

Spans 24" on Center

Standard Lengths: 12', 16', 20'
 Custom Lengths: Up to 28'
 Woodgrain: One Side
 Colors Available: All
 Common Uses: Decking, Railing



1/2" x 6"

Standard Lengths: 18'
 Custom Lengths: Not Available
 Woodgrain: Both Sides
 Colors Available: All
 Common Uses: Fencing, Trim, Fascia, Finishing Touches



1/2" x 10"

Standard Lengths: 12'
 Custom Lengths: Not Available
 Woodgrain: One Side
 Colors Available: All
 Common Uses: Siding, Trim, Fascia, Finishing Touches



2" x 6"

Spans 24" on Center

Standard Lengths: 12', 16', 20'
 Custom Lengths: Up to 28'
 Woodgrain: One Side
 Colors Available: All
 Common Uses: Decking, Railing

| PROFILE (IN) | ACTUAL DIMENSION (IN) | LENGTH | | | | WEIGHT | NO. OF BOARDS PER BUNDLE |
|--------------|-----------------------|---------------------|----------|----------|----------|------------|--------------------------|
| | | 12' | 16' | 18' | 20' | | |
| | | WEIGHT (PER BUNDLE) | | | | | |
| 5/4" x 6" | 1.02" x 5.5" | 1,398 lb | 1,864 lb | | 2,330 lb | 1.82 lb/ft | 64 |
| 5/4" x 8" | 1.02" x 7.25" | 1,692 lb | 2,256 lb | | 2,820 lb | 2.35 lb/ft | 60 |
| 2" x 6" | 1.35" x 5.5" | 1,805 lb | 2,406 lb | | 3,008 lb | 2.35 lb/ft | 64 |
| 1/2" x 6" | 0.44" x 5.5" | | | 3,168 lb | | 1.10 lb/ft | 160 |
| 1/2" x 10" | 0.44" x 9.38" | 1,848 lb | | | | 1.75 lb/ft | 88 |
| | PALLET WEIGHT | 80 lb | 100 lb | 120 lb | 120 lb | | |

OC™ LUMBER

Other Applications & Products



STRUCTURAL FRAMING

A rotproof, rustproof composite alternative to traditional wood and steel. Designed to install like the lumber you use every day.



STRUCTURAL POSTS

A high-performance composite alternative designed to enable resilient and durable structures.

View products at owenscorning.com/lumber

PROJECT GALLERY

Across a range of applications — municipal, commercial, and residential — WEARDECK® delivers outstanding strength that's easy to maintain and looks incredible for years to come.

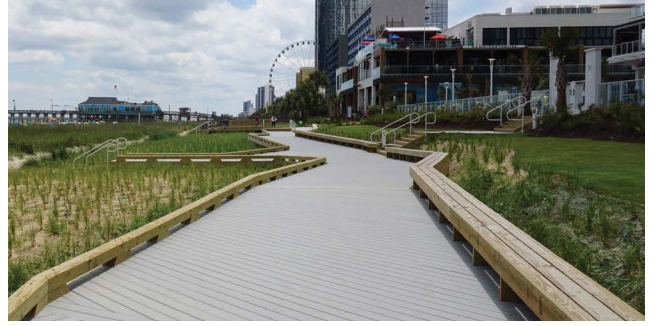


Conch Inn Resort & Marina

Marsh Harbour, Bahamas

Application: Understructure, Decking

After Hurricane Dorian destroyed the marina in 2019, the Conch Inn opted for a wood-free project featuring Barefoot Gray WEARDECK® and synthetic pilings.



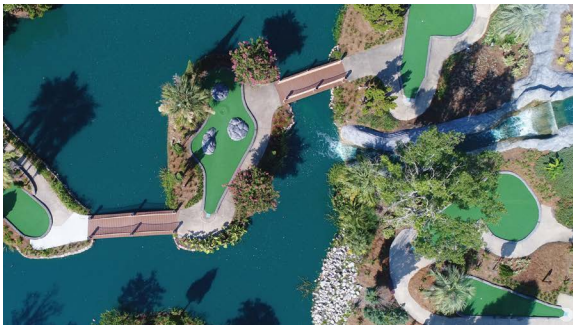
North Ocean Blvd. Boardwalk

Myrtle Beach, South Carolina

East of Hilton Grand Vacations Club Ocean Enclave

Application: Decking

Heat-reflective Gray WEARDECK® stays cool for barefoot beachgoers and stands up against heavy foot traffic.



Frankie's Fun Park

North Charleston, South Carolina

Application: Decking

Frankie's installed Saddle WEARDECK® bridges along its miniature golf course for a durable, low-maintenance decking solution.



Residential Pool Deck

North Captiva Island, Florida

Application: Decking

Weatherwood WEARDECK® was the ideal choice for these homeowners, protecting against constant exposure to sun and water while matching their décor.



Residential Dock

Lake Howard in Winter Haven, Florida

Application: Understructure, Decking, Seating, Fascia

Featuring only wood-free building materials, this private dock combines Barefoot Gray, Gray, and White WEARDECK® for a sleek look that will last a lifetime.



Residential Deck

Savannah, Georgia

Application: Decking, Fascia

To create the ultimate outdoor living space, the homeowners chose Sand WEARDECK® across their seating, dining, and kitchen areas.

THIS IS
HOW WE
BUILD NOW™



WEARDECK® STORIES

"I've been building decks and docks for over 20 years, and WEARDECK® is the best Composite Lumber I've used. It's easy to work with, it's structural, and it doesn't shrink and expand like others!"

Daniel S.

Overbeck Marine Construction, Inc.

"We have been using WEARDECK® for years. It's the best decking choice in the Marine Construction industry. It's durable, aesthetically pleasing, versatile, and so easy to maintain!"

Brandon T.

Anchorage Marine

"I replaced a large deck at my lake house with WEARDECK®. Now, my granddaughters can jump rope barefoot... no splinters, slip-resistant, and it never gets too hot in direct sunlight!"

Mike N.

Homeowner

SUSTAINABILITY IT ALL ADDS UP TO MAKE A DIFFERENCE

A sustainable future is the whole world's responsibility. At Owens Corning, it's our mission. Our products are designed and manufactured with sustainability in mind, and WEARDECK® Composite Lumber is no exception. WEARDECK® Composite Lumber helps you build things that will remain strong for a lifetime, drastically reducing the lumber and deck boards that would otherwise end up in the landfill. It all adds up to a world of difference.

[Learn more: owenscorning.com/sustainability](https://www.owenscorning.com/sustainability)

Our 2030 Goals



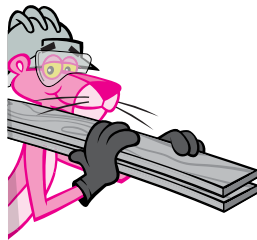
Reduce Greenhouse Gas Emissions by half



Switch to 100% Renewable Electricity



Send Zero Waste to Landfill by cutting in half the amount of waste we generate and recycling the rest



Owens Corning Lumber

5111 S. Pine Ave. #G
Ocala, FL 34480
855-909-9501

HOW WE BUILD NOW™

<https://www.owenscorning.com/decking>

This information and data contained herein is offered solely as a guide in the selection of product. We believe this information to be reliable but do not guarantee its applicability to the user's process or assume any responsibility or liability arising out of its use or performance. The user agrees to be responsible for thoroughly testing any application of the product to determine its suitability. Because of numerous factors affecting results, we make no warranty of any kind, express or implied, including those of merchantability and fitness for a particular purpose. Statements in this publication shall not be construed as representations or warranties or as inducements to infringe on any patent or violate any law, safety code, or insurance regulation. We reserve the right to modify this document without prior notice.

Pub. No. 10025740-B. May 2024. THE PINK PANTHER™ & © 1964–2024 Metro-Goldwyn-Mayer Studios Inc. All Rights Reserved.
© 2024 Owens Corning. All Rights Reserved.